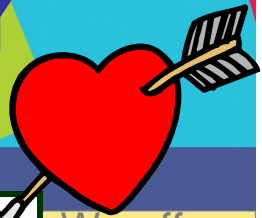




# FEBRUARY

2010

Mini Food – BIG FLAVOR!



MONDAY TUESDAY WEDNESDAY THURSDAY FRIDAY

**Little Sandwiches with**  
 **SLAMMING BIG FLAVOR!**  
 February 22-26, 2010  
 BBQ Chicken Sliders Honey Apple Ham Sliders  
 Mini Cheeseburger Sliders  
 Mini Turkey Club Sliders Mini Tuna Sliders

**United We Read, Elmwood Park!**  
 Join in a Taste of Pakistan on  
**Thursday, February 18<sup>th</sup>**  
 Chicken Tikkas w/Mutter Pulao and sides of  
 Maste Khair Salad and Naan Bread  
 with a chance to win the book  
**Listen to the Wind OR Three Cups of Tea**

We offer several entrees daily!

Choose from one of the three featured selections or Chef Salad, Tony's Cheese Pizza or Sunbutter & Jelly Sandwich.  
 Then add at least one Vegetable/Fruit (featured on menu or found on the Cold Food Bar) or Milk. Milk offered includes 1% White, Skim or 1% Chocolate. Milk is included with lunch. Milk ala carte \$.50

**Cold Food Bar Includes:**  
 Whole Baby Carrots  
 Celery Sticks  
 Variety Vegetable  
 Whole Apple  
 Whole Banana  
 Orange Smiles  
 Variety Can Fruit  
 Bread Basket

\*\*Pork Product marked with an asterick.  
**LUNCH PRICES:**  
 Full Meal \$2.40  
 Reduced Meal \$.40  
 Student Entrée Only \$2.40  
 Adult Meal \$2.90  
 Adult Entrée Only \$2.90  
 Chef Salad Only \$2.40

Call the Food Service Office with any questions or concerns:  
 Debbie Mele  
 708-583-6257 or  
 Susan Walsh  
 708-583-5463

**1 Celebrate the SUPER BOWL with SOUPER BOWLS**

<p><b>1</b>  <b>Chicken Noodle Soup w/Warm Dinner Rolls</b>                  Turkey Corn Dog                  Ham &amp; Ch. Sandwich**                  Golden Corn                  Pears</p>	<p><b>2</b>  <b>LUNCH IN THE CLASSROOM</b>                  Grilled Hot Ham &amp; Ch. Sand.                  Tony's Cheese Pizza                  Bologna &amp; Ch. Sand.**                  Whole Baby Carrots                  Whole Apple</p>	<p><b>3</b>  <b>Chili Bowl w/Cornbread Muffin</b>                  Toasted Ch. Sandwich                  Mini Sub Sandwich**                  Tossed Salad/Dressing                  Applesauce &amp; Gelatin</p>	<p><b>4</b>                  Pretzel Nuggets w/Ch.                  BBQ Pork Ribette Sand.*                  Turkey/Ch. Sandwich  <b>Minestrone Soup</b>                  Peaches</p>	<p><b>5</b>                  Tony's Pepperoni Pizza**                  Chicken Quesadilla  <b>Cream of Tomato Soup</b>                  Mixed Fruit</p>
--	--	---	---	---

<p><b>8</b>                  Brd. Chicken Nuggets                  Cheeseburger on Bun                  Ham &amp; Ch. Sandwich**                  Carrot Coins                  Pears</p>	<p><b>9</b>                  Bkft. Bagel w/Egg &amp; Ch.                  Brd. Chicken Sandwich                  Bologna &amp; Ch. Sandwich                  Tater Tots                  Mixed Fruit &amp; Gelatin</p>	<p><b>10</b>                  Beef Tacos                  Turkey Dog on Bun                  Mini Sub Sandwich**                  Refried Beans                  Peaches</p>	<p><b>11</b>                  Italian Dunkers                  Italian Meatball Sub                  Turkey/Ch. Sandwich                  Tossed Salad/Dressing                  Applesauce</p>	<p><b>12 NO CLASSES for STUDENTS</b></p>
---	--	--	---	--

**Celebrate Chinese New Year of the Tiger MANDARIN ORANGE CHICKEN SALAD this week!**  
 (Breaded Chicken Strips on bed of Mixed Greens with Mandarin Oranges & Crispy Chow Mein Noodles & side of Citrus Dressing)

<p><b>15 NO CLASSES for STUDENTS</b></p>	<p><b>16</b>                  Beef Nachos                  Turkey Corn Dog                  Bologna &amp; Ch. Sandwich                  Golden Corn                  Applesauce</p>	<p><b>17</b>                  Pretzel Nuggets w/Ch.                  Cheeseburger on Bun                  Mini Sub Sandwich**                  Tater Tots                  Peaches                  Gelatin</p>	<p><b>18 Pakistan Chicken Tikkas w/Mutter Pulao</b>                  BBQ Pork Ribette Sand.** or                  Turkey/Ch. Sandwich                  with Green Beans                  Chunky Applesauce                  Masta Khair &amp; Naan Bread</p>	<p><b>19</b>                  Tony's Pepperoni Pizza**                  Beef Quesadilla                  Tuna Salad Sandwich                  Carrot Coins                  Mixed Fruit</p>
--	---	---	--	---

**ACE'S "WORLD ADVENTURE" continues LUCKY TRAY DAY EVERYDAY this week!**

<p><b>22</b>   <b>BBQ Chicken Sliders</b>                  Sloppy Joe Melt                  Ham &amp; Ch. Sandwich**                  Garden Peas                  Pears</p>	<p><b>23</b>                  Soft Beef Tacos                  Turkey Dog on Bun   <b>Honey Apple Ham Sliders</b>                  Refried Beans                  Mixed Fruit                  Gelatin</p>	<p><b>24</b>   <b>Mini CheeseBurger Sliders</b>                  Baked Mac &amp; Ch.                  w/Texas Toast                  Mini Sub Sandwich**                  Tossed Salad/Dressing                  Applesauce</p>	<p><b>25</b>                  Brd. Chicken Sandwich                  Italian Meatball Sub   <b>Mini Turkey Club Sliders</b>                  Tater Tots                  Peaches</p>	<p><b>26</b>                  Tony's Cheese Pizza**                  Brd. English Muffin                  w/Egg &amp; Ch.  <b>Mini Tuna Melts</b>                  Green Beans                   Mixed Fruit</p>
---	---	--	---	---

## ELMWOOD ELEMENTARY SCHOOL ONE WORLD CAFÉ LUNCH MENU



### District 401 Meal Guidelines:

Students need to maintain a positive account balance. Cash or checks made payable to Elmwood Park School District 401 are accepted. Notification of student account balances are sent home with the students when their accounts are at \$5.00 or less. Students who forget to bring lunch & do not have money on their account will be offered ONLY a sunbutter sandwich, vegetable of the day, fruit cup and milk for 6 breakfast/lunch meals maximum. Their account will be charged for a meal each time.

Menus are subject to change without notice.

